

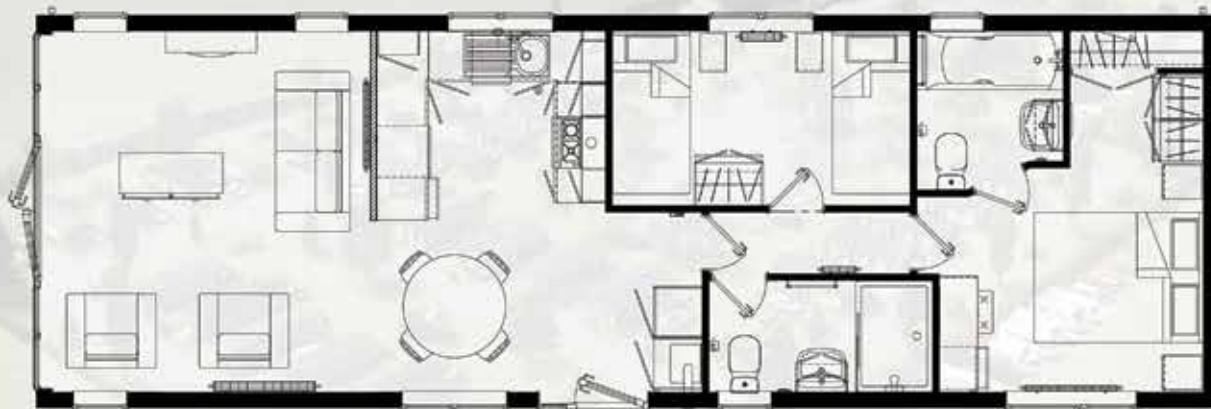


OMAR HOLMESWOOD LUXURY LODGE

Built to full residential standard BS 3632, the Holmeswood single luxury lodge offers a luxurious yet affordable introduction to lodge living! The exterior of the new 2020 model retains the popular features of its predecessor and includes a striking glazed front aspect complete with French doors. Inside, a new fresh and contemporary colour scheme of tidal blues and soft greys gives a soft beachy feel to create a lovely holiday vibe.

- ✓ Open-plan living space with lounge
- ✓ Vaulted ceilings throughout
- ✓ PVCu double glazing
- ✓ Pitched tiled roof
- ✓ Roof dormer over front door
- ✓ Protected by a 10-year Gold Shield structural warranty

OMAR HOLMESWOOD 45X15



ESCAPE TO AN IDYLIC PRIVATE DEVELOPMENT YOUR BRAND NEW HOLIDAY HOME AWAITS

If you're looking for an affordable single luxury lodge with style and practicality, look no further! The practical and stylish open-plan living space includes lounge, dining and kitchen areas. With contemporary interior design, a comfortable Hudson style lounge suite, it is no surprise that this lodge is a firm favourite with lodge purchasers in 2020.



STUNNING HOMES FOR SALE AT BEECHTREE LAKES

BeechTree Lakes is an exceptional family-owned and operated leisure park with a new development of 38 luxury holiday lodges in stunning surroundings. The Holmeswood offers affordable luxury with a distinctive holiday feel.

Enjoy absolute peace